



ENTERPRISE DESKTOP SOFTWARE

> Features

- Protect yourself and your company. Accurately catch up to 99% of Spam.
- Private and secure.
- Works with most POP mail clients or choose full transparent integration with MS Outlook.
- No maintenance required.



> How Does Mailshell Anti-Spam Work?

Accurately Catch Spam

For each message, Mailshell Anti-Spam applies checks of its four spam detection engines:

- *SpamBulk Engine*: Is the message or similar messages sent in bulk?
- *SpamRepute Engine*: Do most people want the message?
- *SpamContent Engine*: Will most people consider the message offensive?
- *SpamTricks Engine*: Is the message formatted or sent to bypass anti-spam rules or to be economical for spammers?

For every message, the four engines check over a thousand rules and several locally cached databases. Mailshell Anti-Spam also creates a fingerprint ID for every e-mail message and compares it to existing fingerprints in its databases. Customers can opt to receive scheduled or real-time rules updates. The results of all of the engines are combined using SpamScore, a proprietary Bayesian statistical formula, into one final spam probability score.

Since spam constantly evolves, the Mailshell SpamLabs continuously collects and analyzes millions of new spam and legitimate messages and user feedback to tune the rules and databases and adjust the weighting of existing rules.

Universal POP Support

Mailshell Anti-Spam Universal Edition works with most desktop email applications including Outlook Express,

Outlook, Netscape Messenger, and Eudora. You choose the filter strength and decide if you want spam put in its own folder, deleted, bounced or simply marked so you'll know to avoid it. Our simple setup takes less than five minutes.

Full Transparent Outlook Integration

Mailshell Anti-Spam Outlook Edition is fully integrated with Outlook 2000, 2002/XP, and 2003. No setup is necessary. Mailshell Anti-Spam automatically includes your contacts folder in your approved senders list and automatically synchronizes your Outlook junk senders list with your blocked senders list. Outlook works just as before but now 99% of spam is magically caught in a spam folder. Mailshell Anti-Spam Outlook Edition is for MS Outlook only. Outlook Express users should use Mailshell Anti-Spam Universal Edition.

Private and Secure

No message ever leaves your computer. Your email account passwords are never accessed.

No Maintenance Required

Mailshell Anti-Spam automatically updates itself to maintain its spam catching accuracy.

> Specifications

- Windows 95, 98, 2000, NT, ME, XP
- Email account must be either POP, MSN, Hotmail, or Microsoft Exchange
- Internet Explorer 5.0+
- 15 MB free hard disk space

> About Mailshell

Mailshell is the #1 provider of OEM spam filtering and anti-phishing software. It is the first and only spam engine in the world with SpamCompiler Technology, which can process more than a million filter checks in a fraction of a second.

More than 6,000 companies and 15 million consumers worldwide rely on Mailshell to block spam and phishing. Mailshell's software is deployed by OEM partners including Computer Associates, Oracle, Panda Software, CyberGuard, ZyXEL, Broderbund, Lyris Technologies, and Finjan Software among others. Mailshell was founded in 1999 and enjoys a 100% renewal rate among its OEM partners.

Mailshell's OEM model helps partners increase their average revenue per customer, create new sources of recurring revenue, and decrease sales, support and development costs.

> REVIEWS AND PRAISE

"Mailshell is priceless"

Forbes

"Mailshell is easy to use"



One of "the best ways to prevent spam"

THE WALL STREET JOURNAL

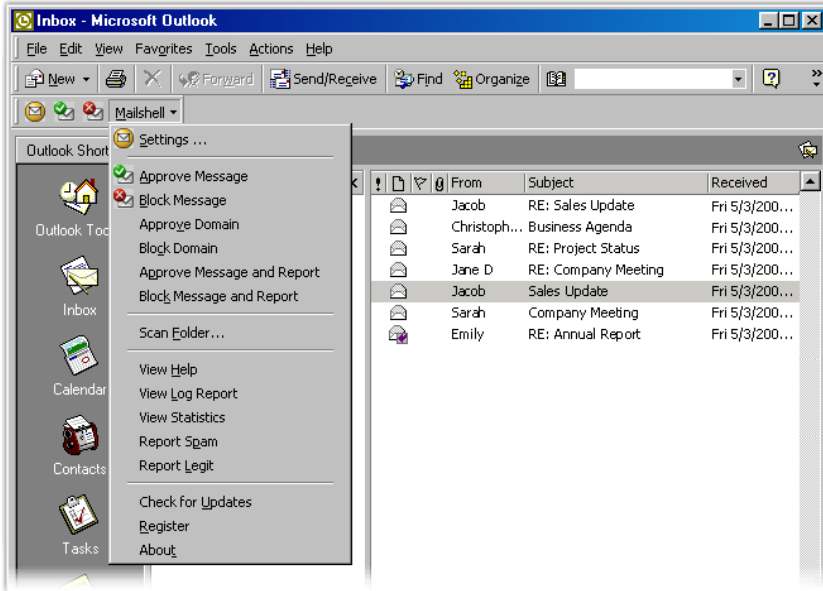
Mailshell is "excellent"



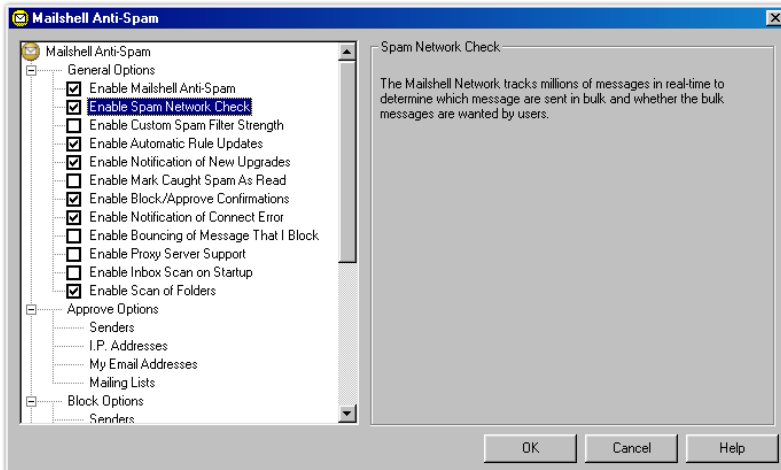
"Mailshell is worth its cost"



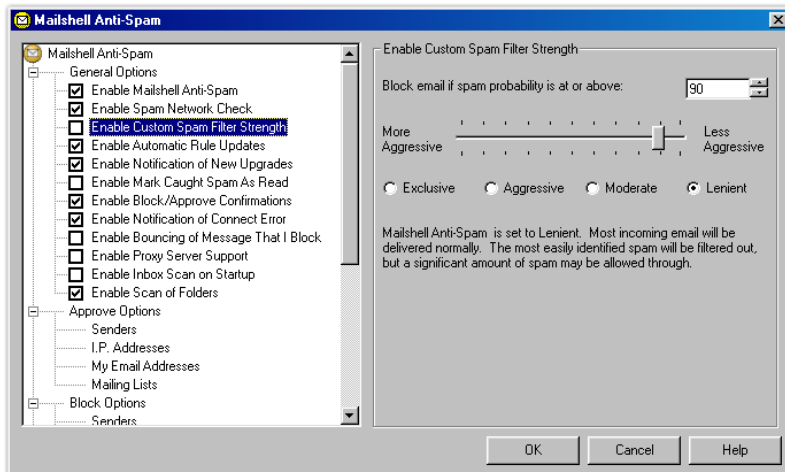
> Screenshots for Mailshell Anti-Spam Desktop Outlook Edition



Mailshell Anti-Spam Desktop Outlook Edition automatically runs as soon as Outlook is launched. Mailshell Anti-Spam adds an unobtrusive menu to the top nav bar and three small buttons to the standard toolbar. Caught Spam is moved to a spam folder under your main Personal Folders.



When you fetch new email, the software creates an anonymous fingerprint ID of the email and immediately checks the Mailshell Network if the email is spam.



General Options allow you to adjust your program settings, and to customize what Mailshell Anti-Spam filtering threshold you want to use.

> PARTNERS' TESTIMONIALS

"Mailshell's existing solution and future roadmap allows us to offer true best-of-breed technology to our customers."

Karel Obluk, CTO, AVG



"Mailshell is an ideal OEM partner."

Frank Berzau, Director, Product Management, McAfee



"We tested several new reputation technologies and were impressed with Mailshell LiveFeed's speed, accuracy and ease of use."

Mike Irwin, COO, Webroot



"Our 'Powered by Mailshell' spam filter has been a great source of profitable, recurring revenue."

Vladimir Butenko, President and CEO, CommuniGate Systems

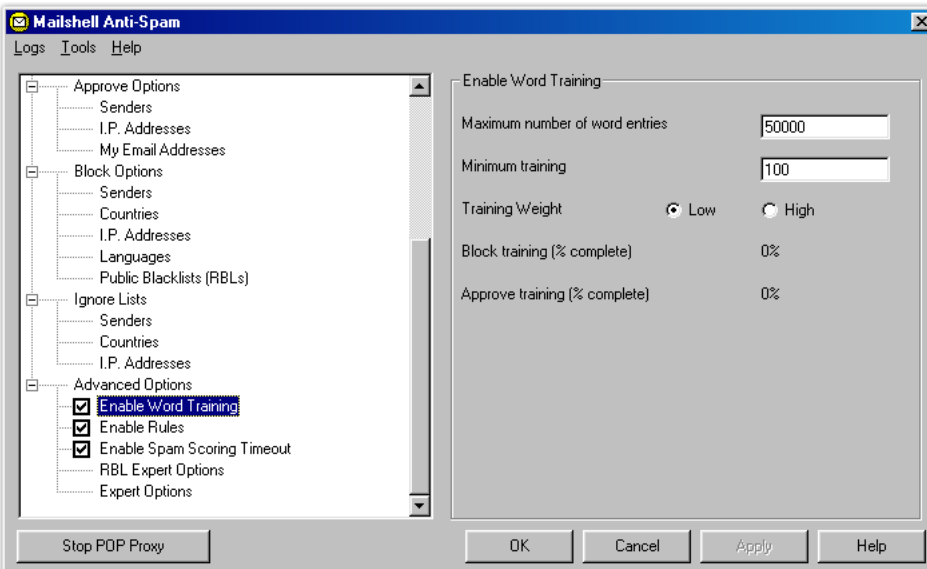
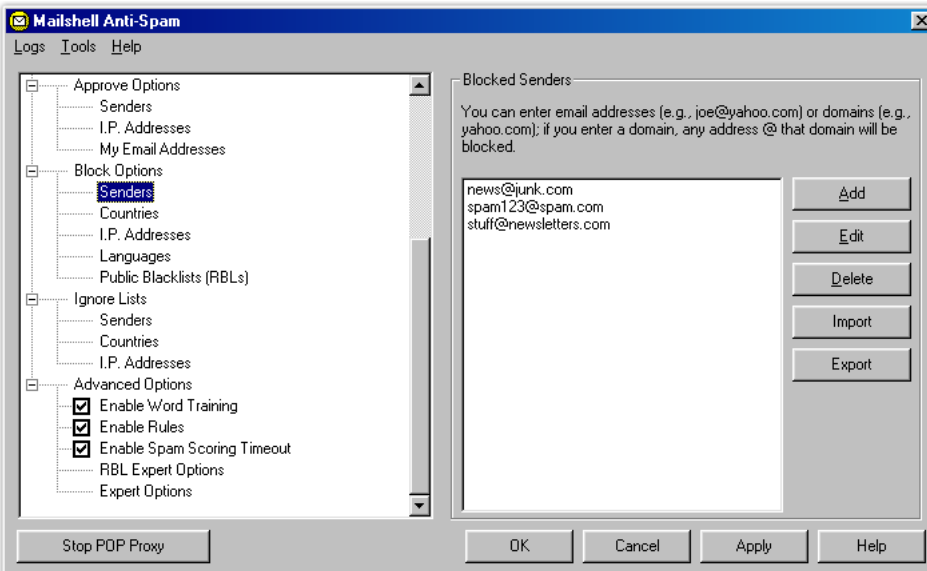
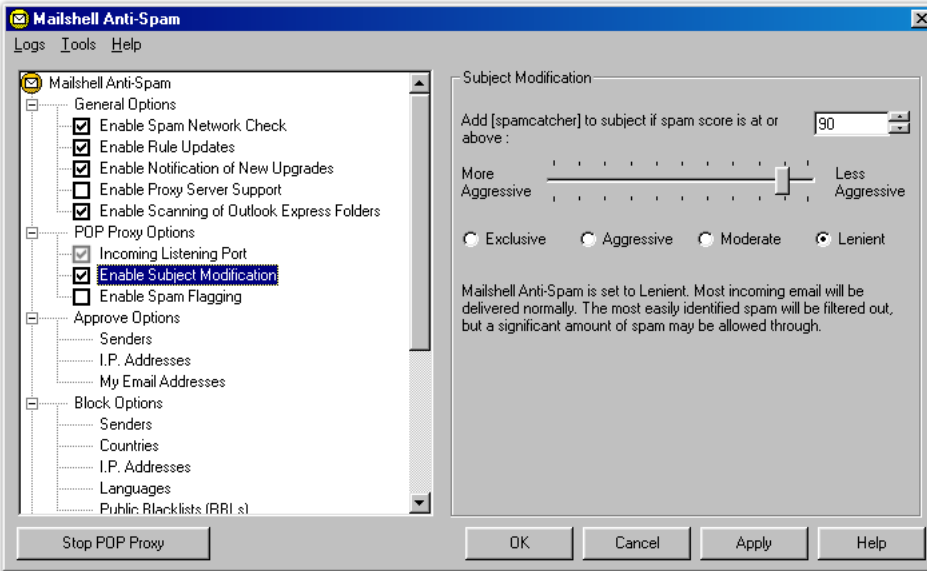


"We conducted exhaustive evaluations of several technologies before landing on Mailshell."

Miroslav Trnka, Managing Director, ESET



> Screenshots for Mailshell Anti-Spam Desktop Universal Edition



> SELECT OEM CUSTOMERS



The Federal Trade Commission uses Mailshell software for all its spam-related criminal investigations.



Panda Software licenses the Mailshell SDK for use in its full range of products, from enterprise security appliances to desktop consumer anti-virus products.



Mailshell is the only anti-spam solution approved for use with Oracle Collaboration Suite.



Broderbund publishes SpamShredder, a desktop anti-spam application featuring the Mailshell SDK.



Global Technology Associates, Inc., licenses the Mailshell SDK for use in its full range of security appliances and software.



Lyris Technologies licenses the Mailshell SDK for use in its MailShield products.



CommuniGate Systems licenses Mailshell's SpamCompiler SDK to offer a spam filtering plugin for its CommuniGate Pro software.

